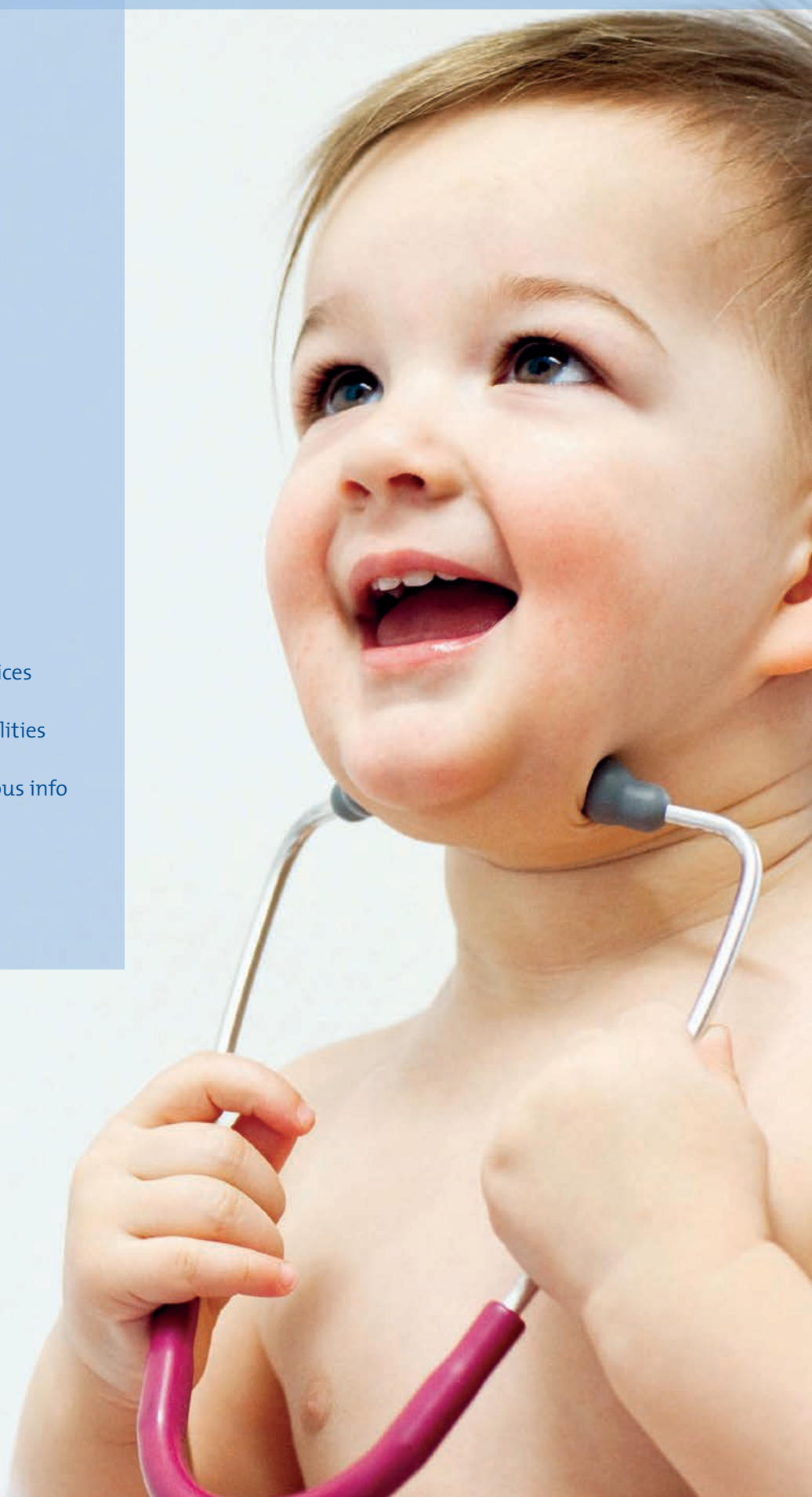




**Welcome to the
University Hospital of Essen**
Information for our patients

3	Foreword
4	Who are we?
5	Research and teaching – for tomorrow's treatments
8	Patient care
10	From admission to discharge
12	Pastoral care and social services
14	Financial matters and formalities
15	Useful facts and miscellaneous info
20	Looking back ...
22	Editorial Details





Dear Patient,

Welcome to the University Hospital of Essen (UH Essen). UH Essen is now the largest single-campus university hospital in the Ruhr conurbation, thereby making it truly the “Ruhr Hospital”, serving the entire urban area.

Our University Hospital offers you medical care, advanced diagnostics and comprehensive treatment to the very highest international standards. UH Essen has been providing excellent patient care and conducting research and teaching work since 1963. Our doctors, nurses and all other staff want to work to make your stay with us as pleasant as possible. We want you to feel both comfortable and well cared for while we do everything medically possible for your health and wellbeing.

In order to ensure our high standards of medical capability are also maintained in future, UH Essen will be opening more departments over the coming years which will be well equipped and meet the latest medical standards. This will benefit you as a patient.

In the pages that follow we would like to familiarise you with the hospital itself, day-to-day matters of interest to you, our wide range of medical facilities and the centres of emphasis in the research we do.

Thank you for putting your trust in us, and we wish you a speedy recovery.

On behalf of the entire UH Essen Board of Management

A handwritten signature in blue ink, appearing to read 'J. Werner'.

Prof Dr Jochen A. Werner
Medical Director



Who are we?

Top university-level medical care

As a tertiary care hospital, UH Essen today really is the “Ruhr Hospital”, covering the entire Ruhr conurbation. Each year, we treat around 53,000 inpatients (our facilities have a total of 1,300 beds) as well as 195,000 outpatients. More than 6,000 experts from a wide variety of disciplines across 27 departments and 24 institutes ensure excellent interdisciplinary diagnosis and treatment at the cutting edge of research. The three pillars of research, teaching and patient care form the common thread linking all we do at UH Essen – and our focus is, at all times, on the patient.

In addition to research into genetic medicine, immunology and infectious diseases, UH Essen has concentrated successfully for years on the three main specialisms of oncology, cardiovascular medicine and transplants.

Even beyond these specialisms, it has established itself as a tertiary care hospital in many different disciplines and is the central place attracting people from all over the Ruhr conurbation. Examples of this are the Perinatal Centre, the Stroke Unit in the Department of Neurology, the Headache Centre and the West German Proton Therapy Centre in Essen.

Vocational training and employment

As well as caring for patients and conducting research, we also help train the professionals of tomorrow. Around 1,800 aspiring doctors are currently studying at the Medical Faculty of the University of Duisburg-Essen. In addition, we are also training approximately 650 young apprentices in 22 different professions – including health care and nursing, physiotherapy, massage and medical spa therapy, and as dieticians’ assistants and speech therapists. Indeed, industrial mechanics (equipment and precision engineering) and carpenters can also learn their trades with us.



Research and teaching – for tomorrow's treatments

At our University Hospital, doctors and academic staff work on researching illnesses and their causes and backgrounds. This cutting-edge medical research is what defines the special quality of our medical departments, feeding through directly to patient care and benefitting you, the patient. The diagnosis and treatment of your medical condition are at the centre of all we do. And, where feasible, you benefit from new findings as early as possible. We also train students for the medical profession.

This can manifest itself from day to day in our medical departments: For example, you might be asked to allow students to examine you – under expert supervision of course – or to tell them about medical history. Please be assured that no examination will be conducted, or treatment provided, without your full prior consent. Your participation in this is entirely voluntary. We will give you specific information on the objective of your treatment and the individual processes involved.

As a central service facility within the Medical Faculty, the West German Bio-Bank in Essen (WBE) is able to play a key role in researching the underlying causes of illnesses and disorders: here, sample materials are stored together with the relevant donor information (strictly confidential) and held available for medical research. By being a donor, you're playing a key part in helping develop new diagnostic procedures and treatment methods – say by giving a small amount of blood or when some tissue is removed during a routine examination and left over after all necessary routine analyses have been conducted. Naturally, this will only happen following your approval as donor (always confirmed in writing).

Your active cooperation would be much appreciated! When making your decision, please bear in mind that the knowledge helping to restore you to good health today was gained with the active help of patients in years past.



Our key research specialisms

Research at UH Essen and the University of Duisburg-Essen Medical Faculty focuses on the key areas of cardiovascular medicine, oncology and transplants as well as the interdisciplinary specialisms of genetic medicine, infectious diseases and immunology. The list of outstanding scientific achievements is too long to cover each one of them. Nevertheless, let us offer you an overview of our key specialisms below.

Cardiac and circulatory system

Our scientists investigate the ways the heart, blood vessels and circulatory system work, trying to find answers to the question of how health problems arise. They are working on ever-better ways to protect the heart and are developing methods enabling cardiac and circulatory disorders to be detected as early as possible, or even prevented altogether. In so doing, they are looking into new drug-based approaches as well as ways to improve existing therapies. Our scientists also conduct investigation work into gene mutations that may increase the risk of cardiovascular disease or offer ways of controlling and directing treatment to best effect.

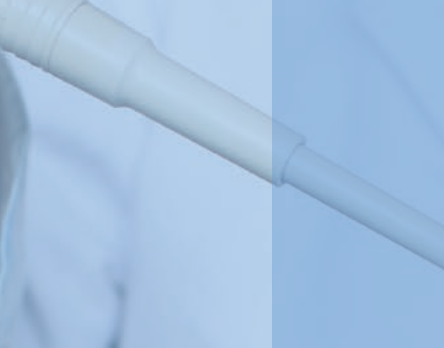
Research also centres on studies into the lack of blood flow to the heart and on the development of improved techniques for treating life-threatening narrowing of the coronary arteries.

Transplants

To get to a point where all available organs are able to be transplanted, we engage not just in patient-based clinical research but also in foundational research work. We are international leaders in this field.

A successful transplant depends crucially on the quality of the transplant organ. As a result, our scientists apply a great deal of thought to the issue of organ preservation and work, for example, on ways to avoid reperfusion injury when the blood supply is re-connected.

It is crucially important that the patient's immune system accepts the donor organ. As a result, we don't just look into ways to monitor the immune status of transplant patients, but are also engaged in researching new, highly effective drugs to prevent transplant organs being rejected. We are also leaders in research into optimising living-donor liver transplants.



Oncology

The overarching goal is to make continuous improvements to the prevention, diagnosis and treatment of cancer. Therapeutic antibodies are among the most promising innovations in cancer diagnosis and treatment. Some of these antibodies are already used by our medical departments and improve the prognosis and quality of life for our patients, sometimes considerably. Another important concern of ours is refinement of chemotherapy and selective molecular cancer therapies, often referred to as personalised cancer therapy. We conduct research into specific tumour growth inhibitors and deploy these in patient treatment plans. In our specialist field of bone marrow transplantation, we are primarily engaged in examining the type-classification of patient immune systems as well as improved donor selection based on immunogenetic characteristics. In addition to this we are also a leader in the field of skin cancer disorders.

Infectious diseases and immunology

Worldwide, many millions of people fall prey to infections spread by viruses or bacteria. Chronic infectious diseases, multi-resistant and emerging pathogens represent significantly major threats to patient health – even in Germany. Especially prone to infection are cancer patients and post-organ-transplant patients, since their immune systems do not provide a fully functional defence mechanism. Being able to offer such patients the best possible treatment of infectious diseases calls for innovative scientific research. Here, we focus primarily on developing new vaccines and treatment procedures for combatting pathogens, and on conducting research into chronic infections and the ways pathogens interact with cells in the immune system.

Genetic medicine

Looking at genes gives us a better understanding of hereditary diseases and their causes. In addition, genetic medicine also makes us better able to assess the risk of diseases caused by the interaction of genetic make-up and environmental factors. This knowledge lays the groundwork for innovative strategies for treatment and prevention. As a result, diagnosis of various diseases and disorders is now centred on genetic findings. These advances in genetic medicine have been, and are being, made with key involvement of our scientific staff.



Patient care

The close linkage between clinical care and systematic research that is typical of university hospital environments enables us to apply new findings and resultant medical progress rapidly for our patients. This way, they get the benefit of the very latest, best possible treatment which only filters through to other patients later once it's become standard practice.

Cardiac and circulatory system

The West German Heart and Vascular Centre Essen (WHGZ) is made up of the Departments of Cardiology, Thoracic and Cardiovascular Surgery and Angiology as well as the scientific Institutes of Molecular Cardiology, Pathophysiology and Pharmacology. This grouping does more than just provide a leading-edge framework for our diagnosis and treatment processes, it also enables us to put research findings into practice more quickly – both of which benefit our patients.

The operating theatres at the WHGZ are equipped with state-of-the-art technology and enable it to perform all current standard cardiothoracic surgery operating procedures under optimum conditions and with maximum patient safety – from simple vasodilatation through to complex heart transplants. The WHGZ also features a hybrid room, a combination of heart catheterisation lab and operating theatre, bringing diagnosis and treatment together on a single table. Our physicians make use of the very latest methods and procedures: for example, life-threatening vascular constrictions (narrowing of the blood vessels) can now be treated without surgery, using catheters, probes and stents, in ways that are far easier on the patient. Even heart valves can be replaced via a catheter – a discipline in which UH Essen is playing a leading role.



Transplants

The sum total of valuable experience accumulated by UH Essen in the field of transplant medicine has made us a leading international transplant centre. We are one of the few centres which transplant all vital organs: kidney, liver, pancreas, heart and lungs.

Kidney and liver transplants are of particular significance, indeed over 3,000 kidneys and 1,800 livers have so far been transplanted in Essen. For these large numbers to be achieved, Essen physicians have developed, among other things, new methods for organ cooling so that transplant organs arrive in a better condition and are rejected less often than even a few years ago. UH Essen is one of the few centres in Germany to perform liver and kidney transplants on children.

Oncology

The West German Cancer Centre (WTZ), created along the lines of an American “Comprehensive Cancer Center”, has been recognised since 2009 as one of the top oncology centres in Germany. Today, WTZ is Germany’s largest cancer centre. Network-based, interdisciplinary working is a key success factor for delivering excellent cancer treatment. An extensive tumour registry and a centralised bio-bank mean WTZ has a first-class infrastructure. And it works: the last four years have seen a double-digit percentage growth in patient numbers.

Improved surgical procedures, radiation therapy, drug-based and highly specific molecular treatment approaches – sometimes in combination with bone marrow or blood stem cell transplants – have together yielded impressive progress in the treatment we give our patients. One example of this is our use of therapeutic antibodies which are currently among the most promising innovations in cancer diagnosis and treatment. Also of special significance is our Department of Bone Marrow Transplantation: it is Europe’s largest clinical establishment focusing on allogeneic stem cell transplants.



From admission to discharge

Admission

In order to admit you as an inpatient we need some personal details. You may register in person at the Central Patient Admissions Office or give written authority to someone to do this for you. The Patient Admissions Office is located in the Administration Building, close to the Information Office. It is open on Monday and Tuesday from 07:30 to 16:00 hrs, on Wednesday and Thursday from 07:30 to 15:30 hrs, and on Friday from 07:30 to 15:00 hrs. If you arrive with us outside office opening hours, say at the weekend or on a public holiday, please register directly on your ward.

Patients at Operations Centre II may register directly at the centre's own Patient Admissions Office. This may be found in the entrance foyer and is open on Monday to Wednesday from 07:30 to 12:30 hrs and on Thursday from 07:30 to 12:00 hrs. Outside these hours, please contact our Central Patient Admissions Office in the Administration Building.

Patients at the West German Heart and Vascular Centre Essen may also register in the building's entrance foyer. The desk is open throughout the day.

The Case Management office in the Medical Centre coordinates patient admissions to the gastroenterology, neurology, nephrology and endocrinology units. You'll find it in the entrance foyer, just behind Reception. Case Management is open from 07:00 to 15:30 hrs Monday to Thursday, and from 07:00 to 14:00 hrs on Friday. Outside these hours, please register on your ward.

Paediatric Department admissions are also handled by Case Management, located in the Paediatric Department entrance foyer. Its opening hours are from 7:30 to 16:00 hrs on Monday to Thursday, and from 7:30 to 14:30 hrs on Friday. Outside opening hours, please register at the Paediatric Department reception desk.

Since November 2015, patient admissions for the Gynaecology Department are now also handled by Case Management. The office is located on the ground floor, beside Outpatient Registration and is open from 07:30 to 16.00 hrs from Monday to Thursday, and from 07:30 to 13:00 hrs on Friday. Outside these hours, please register on your ward.





On the ward

Please contact the nursing staff as soon as you arrive on the ward. Besides routine examinations, specific inpatient medical procedures may be necessary during the course of your stay with us. We will keep you informed in detail on the preparations and procedures involved in all the diagnostic, treatment and nursing care activities.

If you would like to leave the ward for a little stroll around the hospital grounds, please tell the nurses before you go. Coordinating with staff in this way can help avoid missing important examination appointments!

Your room

Each bed in a room comes with a bedside table, a personal wardrobe, a staff call system with built-in striplight, and a telephone and radio. You'll find user instructions for the TV and radio in the drawer of the bedside table. We recommend you keep only small amounts of ready cash with you. Your valuables can be deposited with the ward staff.

If you're sharing a room with one or more other patients, please try to be considerate of each other.

Flowers

Flowers add colour, freshness and a homely atmosphere to your room. For space reasons, and out of respect for your fellow patients, please check with the nursing staff before bringing cut flowers into your room. We ask that patients with increased susceptibility to infection refrain from putting flowers in their rooms.

Alcohol and smoking

Please ask the ward doctor if you wish to consume alcoholic beverages in moderation. Smoking is prohibited in all buildings.

Catering

You have a daily choice of three different set meals. You will be asked for your preferences one day in advance. We are happy to cater for your personal and religious dietary requirements and offer you alternatives. Where you have food allergies – however slight – or have to follow a specific diet, we'll take this into account in consultation with your case doctor.

Leaving hospital

When your case doctor considers your treatment to be complete, he/she will talk to you about the procedures for your discharge. On the day of your discharge please don't forget to take all your personal belongings with you! Please also remember any valuables you may have put into safe keeping on the ward.



Pastoral care and social services

Pastoral care

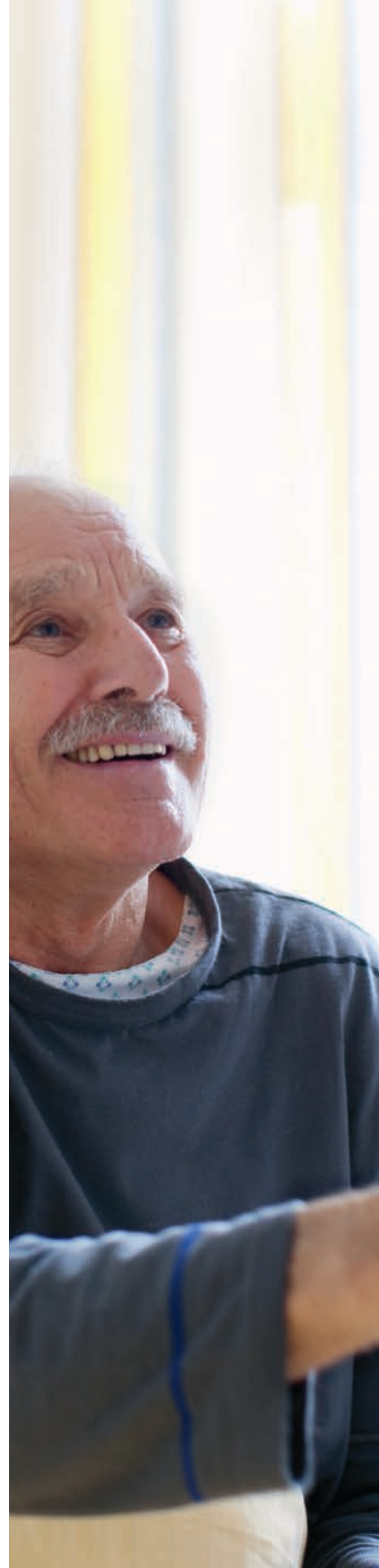
The Protestant (Lutheran) pastoral care team can be contacted during the week on extensions 26 26 and 16 70, and their Roman Catholic counterparts on extension 26 27. At weekends and on public holidays please contact them if necessary via the nursing staff. If you so request, the pastoral staff will be happy to visit you on the ward. Even if you are a member of a non-Christian religion, the pastoral staff will always offer someone to talk to. The ecumenical chapel is located near the multi-storey car park at the main entrance. It is open during the day. For times of services, please see the information sheet on your bedside table. You can also watch the services on TV channel 16.

The Islamic pastoral care staff can be contacted via the nurses, or directly by telephone on 01 76 / 40 09 10 79. The volunteers are originally from various different countries and are able to conduct pastoral conversations in a variety of languages: German, Turkish, Arabic, Albanian, Italian, Kurdish and English. The Muslim prayer room is open to patients each day between 06:00 and 22:00 hrs. It can be found in Operations Centre I, next to the old pharmacy.

Social services

Working alongside medical care, the social services function is an essential component of patient care. We will help and support you in all matters arising in connection with medical condition and its treatment, and which represent a significant impact on your life. In addition to this, we also offer counselling services to complement the outpatient offerings and comprehensive treatment offered by the West German Cancer Centre (WTZ).

An acute or chronic medical condition or disability also brings with it psychological and emotional stresses which can potentially impact you and your family on a personal, professional or social level. Our trained counsellors and psychologists are on hand to help you in the process of dealing with your medical condition, to relieve anxiety and to come alongside you to help find answers and solutions. All discussions take place in a safe, confidential setting.





A properly organised approach to discharging patients is essential in ensuring that patients continue to get the medical treatment and care they need once their stay with us draws to a close. Based on your individual requirements, and in close coordination with the entire treatment team, we will identify a made-to-measure assistance plan to ensure you continue to receive the care and support you need after leaving hospital.

The consulting hours are weekdays between 08:30 and 09:30 hrs, and also by arrangement. Initial contact may be made via ward staff. Alternatively, if you prefer, feel free to call us in person on ext. 37 26.

Ecumenical Hospital Assistance – Green Ladies and Green Gentlemen

Our Ecumenical Hospital Assistance volunteers are on hand to talk with you and provide small acts of assistance to make your stay more pleasant. They are on the wards twice a week. The Green Ladies and Green Gentlemen may be contacted by telephone on ext. 26 26.

Ruhrland School – a school for patients

The “Ruhrland School – a school for patients” is a public-sector school. Teachers trained for all types of educational establishment are available to teach your child in the event of a chronic illness or prolonged hospital stay. In consultation with case doctors, tuition will take account of your child’s state of health and current needs. Tuition is provided either individually or in groups, in the school building, in hospital-based school facilities or by the bedside. For detailed information, please contact the secretary’s office at Ruhrland School on 02 01 / 70 50 23.



Financial matters and formalities

The Bursar's Office is located in the Administration Building next to the Patient Admissions Office. Here you can pay 28 days' worth of the statutory top-up charge of 10 euros per day of stay. The Bursar's Office is open on Monday to Friday between 07:45 and 13:00 hrs and between 13:45 and 15:00 hrs. You may also pay the amount due by bank transfer to any one of the following accounts:

Bank	IBAN	BIC / SWIFT
Postbank Essen	DE67 3601 0043 0003 5264 32	PBNKDEFF360
Sparkasse Essen	DE82 3605 0105 0004 9007 00	SPESDE3EXXX

Any excess amounts paid – due to a shorter stay with us – will be refunded upon discharge. Please retain your receipt. It is accepted as proof of payment(s) to be credited against any further hospital stay(s) during the same calendar year. Should your stay with us end up being longer than planned, please pay the outstanding balance after discharge at the Bursar's Office or by bank transfer to one of the above accounts.

You are exempt from top-up charges if you are under 18 years of age or have recently given birth, if your illness requires semi-inpatient treatment (part-hospitalisation) or your inpatient treatment is being paid for by the statutory government accident insurance scheme.

You may choose to make use of elective benefits, if required. These include personal treatment by the senior consultant, accommodation in a two-bed or single-occupancy room, and accommodation of an accompanying individual. Please agree these elective benefits in writing on the day of arrival at the Patient Admissions Office or with the ward responsible for you if you are admitted directly on the ward. If paying your own medical bills, you are obliged to pay for the benefits and services of which you have availed yourself. On the day you are admitted as an inpatient to UH Essen, please make an advance payment at the Bursar's Office to the value of the estimated charges. The value of this amount is calculated provisionally by your case doctor and by admin staff.



Useful facts and miscellaneous info

Banks and ATMs

There is an ATM cash machine at the main entrance to the Administration Building next to the Information Office. You may use your “ec” debit card to withdraw cash from your account. You will also find banks located close to the main hospital entrance on Hufelandstrasse and Gemarkenplatz.

Visitors

To ensure you and your fellow patients have the peace and quiet you need, daily visiting hours end at 20:30 hrs (some exceptions may be permitted). Please bear in mind that a maximum of three people may visit at any one time. Thank you!

Cafeteria

A cafeteria is located in the entrance foyer of Operations Centre II. It is a popular meeting place, offering patients and visitors a change of scene away from the wards. When temperatures permit, you are welcome to sit outside on the patio. The cafeteria is open Monday to Friday between 07:00 and 19:00 hrs and from 09:00 to 18:00 hrs on Saturdays, Sundays and public holidays. As well as breakfast, cold and hot dishes, salads, vegetarian food and cake are also served. Also on offer is an equally wide selection of beverages.

Dietary and nutritional counselling

If you have any questions about specific diets to follow in connection with your medical condition, our dietary and nutritional counselling service will be pleased to help – under doctors’ instructions only (nursing staff will be pleased to make an appointment for you).



Hairdresser

The ladies and gents hairdressing salon is located in the foyer of the West German Heart Centre. The staff will be happy to cut your hair or wash, dye and perm it as you require. The team is on hand from Tuesday to Friday between 09:00 and 18:00 hrs, and on Saturdays between 09:00 and 14:00 hrs. The salon is closed on Mondays. Where patients are unable to visit the salon, hairdressers are also happy to come to the wards. For this service please make an appointment on ext. 48 79. The salon also offers a wig advisory service especially for cancer patients and will also be happy to visit you on the ward.

Lost Property Office

The Lost Property Office is located in the Administration Building, Room 1.14, tel. 34 29. You can also enquire about lost property at the Information Office in the foyer.

Vending machines

Vending machines offering hot and cold drinks and snacks are available to all patients and visitors and can be found in the outpatient units and the Administration Building. You are also welcome to use any of the water dispensers in many outpatient and waiting areas.

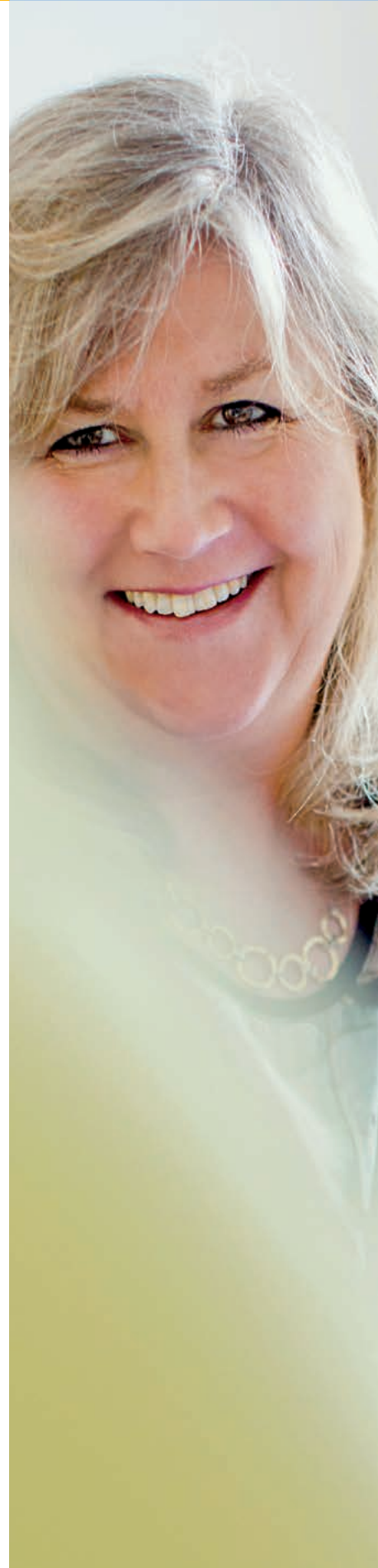
Public telephones

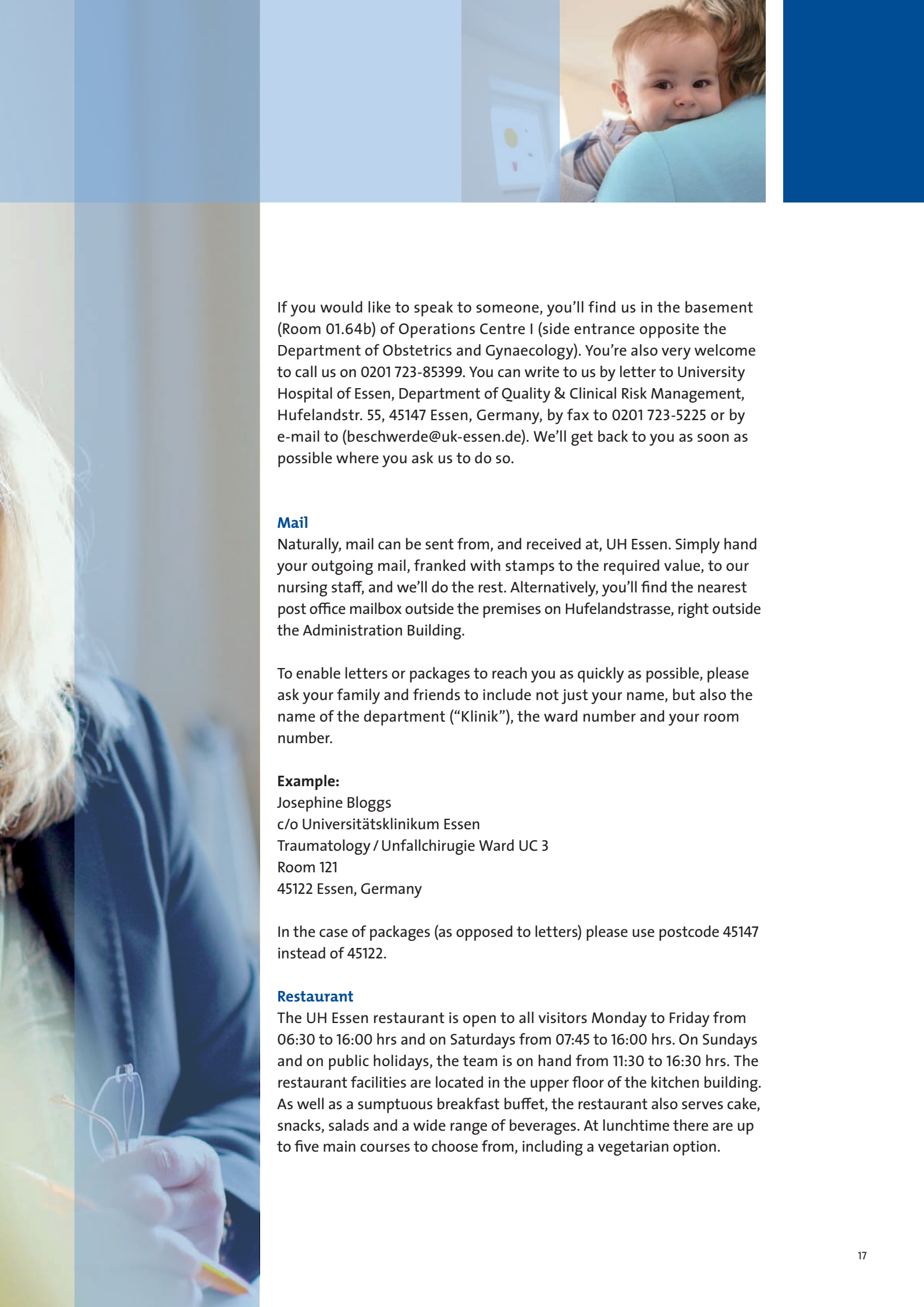
Telephones have been installed on the hospital premises for use by patients and visitors. These payphones accept cards and coins and can be found in the Administration Building and also in the Paediatric & Gynaecology Department.

The use of mobile phones is permitted within the grounds of UH Essen. Upon entering a department or institute, however, mobile phones / smartphones must be switched off because medical equipment may be affected by their radio-wave transmissions.

Feedback and complaints

For many years now, a point of contact for feedback and complaints has been the Patient Feedback Office (Complaints Management) which was established by the Department of Quality & Clinical Risk Management. Staff in the department receive and record all kinds of ideas, complaints, concerns and praise from patients and their families and visitors.





If you would like to speak to someone, you'll find us in the basement (Room 01.64b) of Operations Centre I (side entrance opposite the Department of Obstetrics and Gynaecology). You're also very welcome to call us on 0201 723-85399. You can write to us by letter to University Hospital of Essen, Department of Quality & Clinical Risk Management, Hufelandstr. 55, 45147 Essen, Germany, by fax to 0201 723-5225 or by e-mail to (beschwerde@uk-essen.de). We'll get back to you as soon as possible where you ask us to do so.

Mail

Naturally, mail can be sent from, and received at, UH Essen. Simply hand your outgoing mail, franked with stamps to the required value, to our nursing staff, and we'll do the rest. Alternatively, you'll find the nearest post office mailbox outside the premises on Hufelandstrasse, right outside the Administration Building.

To enable letters or packages to reach you as quickly as possible, please ask your family and friends to include not just your name, but also the name of the department ("Klinik"), the ward number and your room number.

Example:

Josephine Bloggs
c/o Universitätsklinikum Essen
Traumatology / Unfallchirurgie Ward UC 3
Room 121
45122 Essen, Germany

In the case of packages (as opposed to letters) please use postcode 45147 instead of 45122.

Restaurant

The UH Essen restaurant is open to all visitors Monday to Friday from 06:30 to 16:00 hrs and on Saturdays from 07:45 to 16:00 hrs. On Sundays and on public holidays, the team is on hand from 11:30 to 16:30 hrs. The restaurant facilities are located in the upper floor of the kitchen building. As well as a sumptuous breakfast buffet, the restaurant also serves cake, snacks, salads and a wide range of beverages. At lunchtime there are up to five main courses to choose from, including a vegetarian option.



University Medical Foundation

In the future, health care will no longer be able to be financed by national health funds, or state and federal government alone. To ensure that UH Essen remains able to provide sophisticated medical care, training of doctors and cutting-edge research, we have established the University Medical Foundation. The foundation supports key projects that go beyond the boundaries of basic medical healthcare and promote innovative research. The foundation relies on donations to fund these sponsored projects.

Contact and information:

Tel. 02 01 / 7 23-46 99

www.universitätsmedizin.de

Account for donations:

Account: 5000 5000 5

Sort code: 37020500

IBAN: DE 0937 0205 0005 0005 0005

BIC: BFSWDE33XXX

Bank für Sozialwirtschaft

Telephone, TV and radio

To help you feel at home during your stay, your room is also equipped with telephone, radio and TV facilities. Radios are mounted on your bedside table's media console.

For EUR 3.90 per day you can have the benefit of

- unlimited telephone calls to all German landlines and mobile numbers (excluding 0800 and premium numbers),
- over 20 public and private-sector TV channels,
- several Sky channels, including "Sky Bundesliga" (German Premier League),
- selected radio stations,
- and Internet (if TV has Internet functionality).

For mobile devices such as iPads, Wi-Fi is available and can be booked for an extra EUR 2.50 per day.





To make calls you need a smart card which can be purchased at the ticket vending machines on the premises. These are located in all major buildings on the UH Essen campus: Administration (LG), OZ I (GR), ENT (LG), Department of Medicine (GR), Radiotherapy Department (GR), Gynaecology Department (foyer), OZ II (GR), Heart and Vascular Centre (GR) and Paediatric Department (GR). For the location of each building, please refer to the flyer “Everything at a glance”: Your guide”. The smart card is issued in return for a EUR 4.00 deposit which is fully refundable. Your telephone account may be topped up at the adjacent payment machine using 5, 10 or 20 euro notes.

Information on how to operate the equipment can be found on your bedside table. To enable you and your neighbours to use TV and radio facilities without disturbing each other, sound is channelled through headphones-only in multi-occupancy rooms. They come equipped with a conventional jack-plug. Headphones may be purchased from the vending machines located as per the telephone card vending machines.

We regret that for fire safety reasons the use of patients’ own television sets is not permitted.

For further information, please refer to the flyer “TV / Telephone – and more”. In the event of any queries, please contact the Rottmeir service team on extension 79 92 or by calling externally on 02 01 / 7 23-79 92.

Overnight accommodation

A range of accommodation is available for guests wishing to stay near the hospital. UH Essen’s own guesthouse has ten mini-apartments on the ground floor of the nurses’ high-rise accommodation building. The German Red Cross Nurses’ Union also offers single and double rooms. Parents whose children are inpatients at UH Essen will find a home from home at Hundertwasser House in the Grugapark or at the “Elternhaus” accommodation building for parents of child cancer patients.

The Paediatric Department, too, keeps some overnight accommodation for use by parents. Our Accommodation Service is located in the Administration Building, Room 1.14. The staff there can be contacted by telephone on 02 01 / 7 23-34 29.



Looking back ...

Early 20th century

1909	City Infirmarium is officially opened on 29th July. It had a Department of Medicine, a Dermatology Department, a pavilion for eye patients and a post-natal lying-in ward.
1910	Completion of the Ophthalmic Department (eye clinic).
1913	The Gynaecology Department goes into operation.

Construction and destruction

1931	The Paediatric Department opens.
1936	Opening of the Robert Koch Building with the task of conducting biological and chemical research.
1940	The new Department of Medicine is opened.
1942–45	Frequent air raids result in almost complete destruction of the hospital. In December 1944 there are only 45 beds left, all located in air raid shelters and cellars.
1945	At the end of the war, 80 % of the hospital has been destroyed by bombs; the supply of water, electricity and heat is non-existent.

Reconstruction

1946–48	Site reconstruction and restoration.
1950	The Paediatric Department re-commences operation.
1953	The Department of Medicine is re-opened.
1955	Renovation of Operations Centre I is completed. Reconstruction of the Gynaecology Department.
1956	The Administration Building commences operation.
1958	Construction of the new Neurology Department.
1959	Detached retinas and ocular tumours are treated using the light coagulator method. Prof Dr Mayer-Schwickerath, Head of the Ophthalmic Department, is put forward for the Nobel Prize in 1973.
1962	The first heart pacemaker is implanted. Tumour research and treatment and radiation biology become specialisms.

From City Infirmarium to University Hospital

1963	The City Infirmarium attains university status.
1964	Construction of the new Robert Koch Building.
1967	The new ENT and Ophthalmic Department and the Radiology & Cancer Departments are opened.
1972	First kidney transplant.
1973	The City Infirmarium is taken over by the province of North-Rhine Westphalia and attached to the Medical Faculty of the University of Essen as a University Hospital.
1975	First bone marrow transplant. Clinical and theoretical research institutions move into the new facility. Establishment of the first Chair of Traumatology in NRW.



From City Infirmary to University Hospital

1977	„West German Cancer Centre e.V.“, a registered society, is established at the University Hospital. Research and treatment are successfully interlinked.
1987	The transplant program is extended to include the liver.
1989	Operations Centre II (OZ II) is opened.
1990	First simultaneous heart-and-kidney transplant.
1991	Creation of one of Germany's first positron emission tomography (PET) centres.
1993	Opening of the new bone marrow transplant department: Europe's largest and most significant.
1994	Establishment of a „Stroke Unit“ for treating stroke patients.
1999	Inauguration of the newly-built Gynaecology Department complete with Perinatal Centre.
2001	The University Hospital becomes an independent public sector institution („AöR“).
2003	Inauguration of the West German Heart Centre in Essen.
2004	New Central Laboratory opened.
2005	Opening of the West German Headache Centre.
2007	Refurbishment of the Department of Radiotherapy. Completion of the Robert Koch Building.
2008	Building work commences on the Dermatology Department. Opening of the West German Cancer Centre Outpatient Unit.
2009	Inauguration of the Dermatology Department. Celebration of the 100th anniversary of the University Hospital of Essen.
2010	Ground-breaking ceremony for the West German Cancer Centre's Inpatient Wing.
2011	Opening of the Medical Research Centre. Inauguration of the Medical Centre. First European-certified Breast Centre. General practitioner professional training association founded at UH Essen. Establishment of the first liver cancer centre in Europe.
2012	Inauguration of the West German Cancer Centre wards (Inpatient Wing). 40 years since the first kidney transplant at UH Essen. 25 years since the first liver transplant at UH Essen. WTZ honoured once again as an Oncology Centre of Excellence. Heart valve inserted through the aorta for the first time in Germany.
2013	First patient treated at the West German Proton Therapy Centre in Essen (WPE). Opening of the West German Centre for Infectious Diseases (WZI). Foundation of the West German Organ Transplant Centre (WZO). 50-year anniversary of the Medical Faculty in Essen. 100-year anniversary of nursing training. Foundation of the Terminal Heart & Lung Insufficiency Centre.
2014	Opening of the Teaching & Learning Centre (LLZ) within the Medical Faculty at the University Hospital of Essen. Opening of the Study Centre for Imaging Procedures at the Medical Faculty for research by the National Cohort. Full takeover of the West German Proton Therapy Centre in Essen (WPE) by the University Hospital of Essen. Award for being a family-friendly enterprise. Certification of Germany's second Wound Centre at the University Hospital of Essen.

Editorial Details

Publisher

University Hospital Essen
Hufelandstrasse 55
45147 Essen
Germany

Newsroom & contact

Marketing and Communications Office
Project management: Lisa Binse
Tel. 02 01/7 23-31 07

Design

designlevel 2, Meerbusch

Photography

teamfoto Marquardt GmbH, Lüdinghausen
zelck – fotografie, Essen

English translation

Paul McNutt, Professional Translator,
Meerbusch

Date

January 2016





University Hospital of Essen
Hufelandstraße 55
45147 Essen
Germany